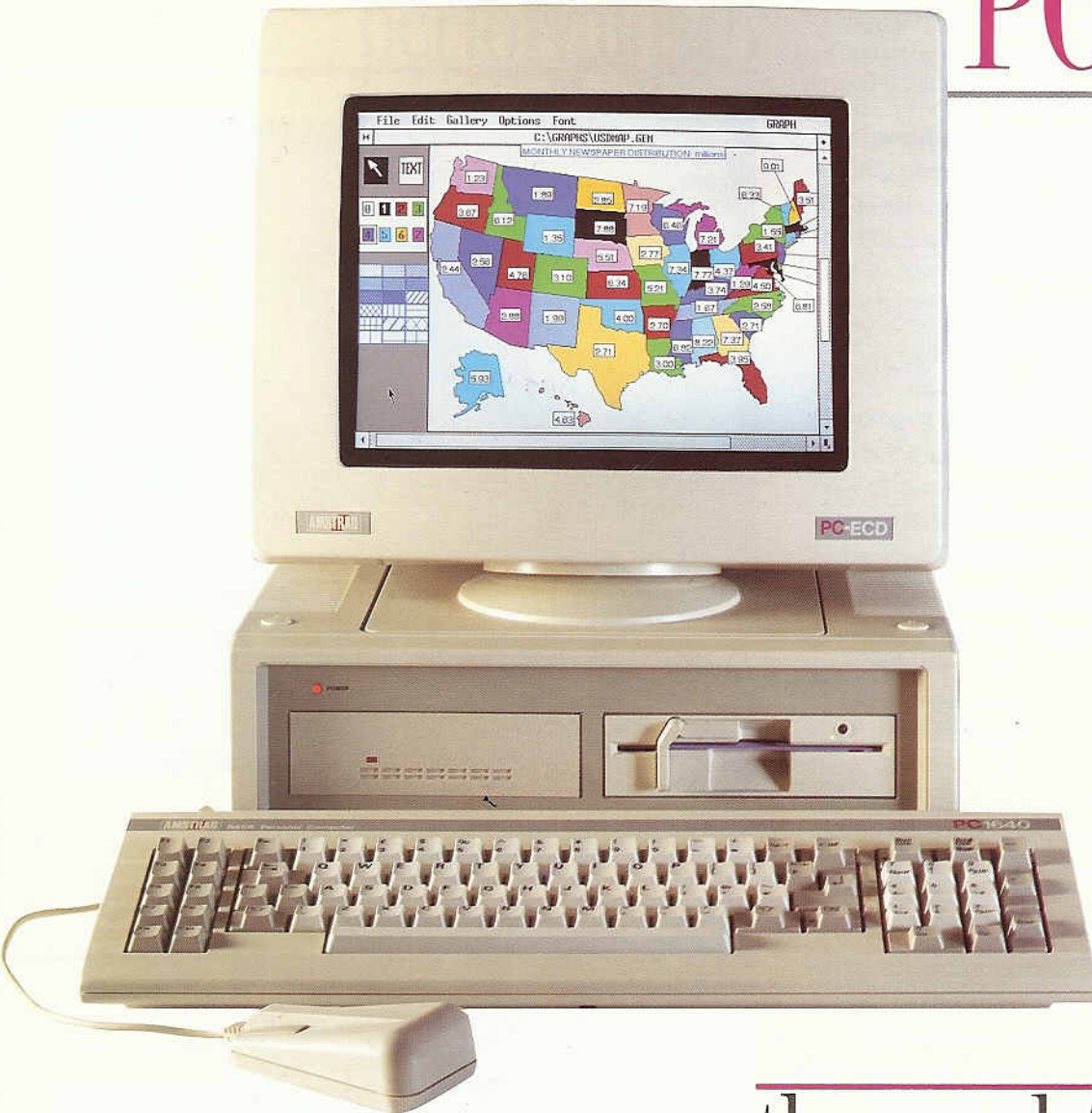


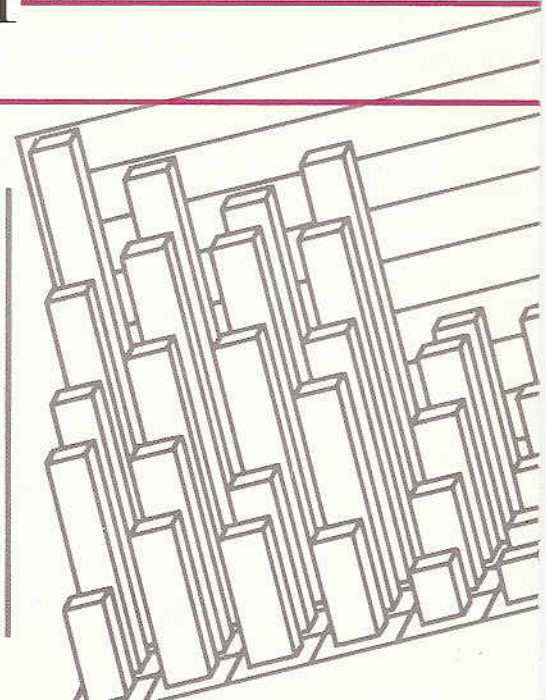
THE AMSTRAD PC1640™



the complete solution

PC compatible with 640K memory
and choice of monochrome,
colour or extra-high resolution
graphics monitors.

AMSTRAD



PC1640

the complete solution for

PC1640

There are nine variations of the PC1640 to choose from:

ECD

Single Drive Enhanced Display
Double Drive Enhanced Display
Hard Drive Enhanced Display

CD

Single Drive Colour Display
Double Drive Colour Display
Hard Drive Colour Display

MD

Single Drive Mono Display
Double Drive Mono Display
Hard Drive Mono Display



Computers have been used in business for many years and have proved to be a vital element in improving efficiency and productivity. But, with so many different tasks and skill levels in an organisation, choosing the right system has in the past been a question of compromise.

The Amstrad PC1640 is the complete solution for effective business computing. This powerful range of personal computers is capable of handling the ever-increasing demands of business professionals, and is backed by a whole industry of compatible software to cover all the important business functions.

It is simple to operate so that first time users quickly become productive, yet it has all the power and advanced performance experienced users demand. The PC1640 is available in a wide range of models to suit most requirements, and it has the communications and networking capability to support integrated corporate information systems.

The PC1640 is an advanced professional business computer range that offers outstanding value-for-money.

More power to the business professional

The Amstrad PC1640 puts computing power on the business professional's desktop. It provides them with all the facilities they need to do business planning and forecasting, correspondence, analysis, accounting and reporting, and it offers them the capability to run exciting new business solutions such as Desktop Publishing or Computer-Aided Design. The PC1640 has exceptional graphics capability to ensure effective presentation and communication, a large memory to deal with the most complex task, access to public and corporate databases†, and the capacity for expansion. It can be used as a powerful multi-tasking workstation or integrated into a corporate information system.

PC1640

advanced performance

Superb graphics: The PC1640 offers users outstanding graphics capability – charts, diagrams, drawings and graphs are sharp, clear and colourful for immediate comprehension and visual impact. High quality graphics help to improve the quality of information in an organisation and add a new dimension to personal computing.

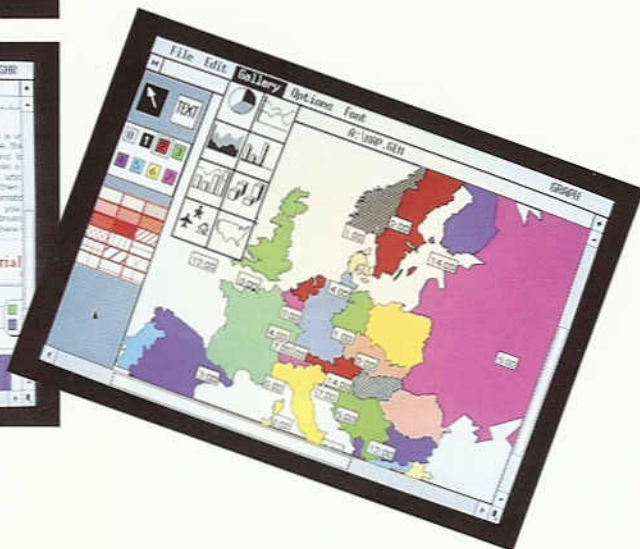
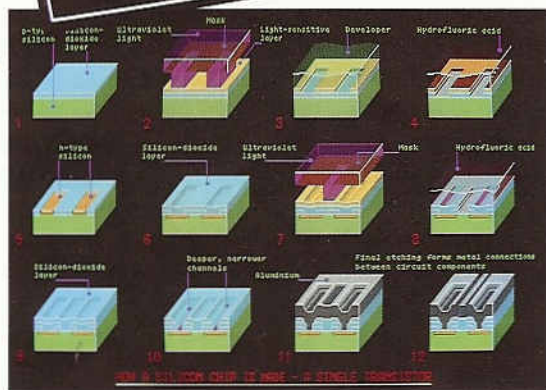
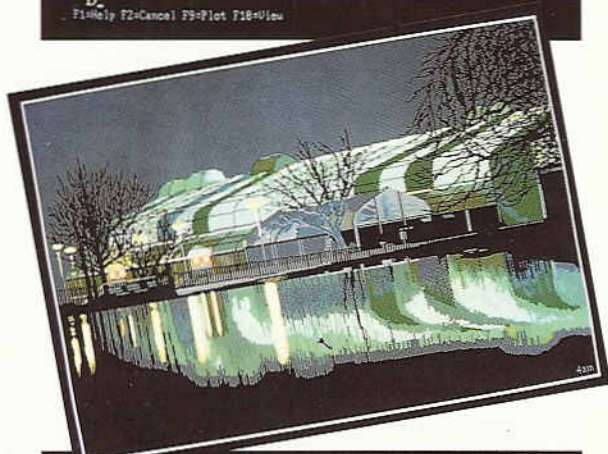
Fast productive computing: The PC1640 is fast. With its powerful processor, commands are executed quickly and programs can be run at up to twice the speed of some other personal computers. The 85-key keyboard is ideal for fast data entry and extended working and there is an ergonomically-designed mouse for rapid execution of commands and movement around the screen.

Clarity of display: The display is clear and comfortable on the eyes. The flicker-free high resolution (MD) screen has a display made up of 252,000 pixels to give clear, readable type, razor-sharp lines and clear graphics. Users can work for longer periods without fatigue or eye strain.

High capacity: The PC1640 is available in three system unit configurations to meet different operating requirements. The single 360K byte capacity floppy disc drive model is supported by the large 640K byte main memory, so that part of the memory can be configured to run programs, while the floppy disc stores data. The twin floppy disc storage system adds an extra 360K byte storage and makes disc copying easier. The 20 Megabyte hard disc version gives even greater storage capacity and operating flexibility, making it ideal for corporate use. Users have the capacity for storing up to three million words of text with room left over for a word processor, spreadsheet, or database and more.

	Q1	Q2	Q3	Q4	Year
Income Statement					
Sales	\$25,000.00	\$20,000.00	\$35,000.00	\$25,000.00	\$105,000.00
Costs	15,000.00	12,000.00	21,000.00	15,000.00	63,000.00
Profit	10,000.00	8,000.00	14,000.00	10,000.00	42,000.00
EXPENSES					
General & Admin	3,750.00	3,000.00	5,250.00	3,750.00	15,750.00
Commitment Fees	3,000.00	2,400.00	4,200.00	3,000.00	12,600.00
Total Expenses	6,750.00	5,400.00	9,450.00	6,750.00	28,350.00
Net Before Tax	3,250.00	2,600.00	4,550.00	3,250.00	13,650.00
Income Tax	650.00	520.00	910.00	650.00	2,730.00
Net Income	2,600.00	2,080.00	3,640.00	2,600.00	10,920.00

Width: 85 Memory: 362 Last Col/Row: 619 ? For HELP
D.
F1=Help F2=Cancel F9=Plot F10=View





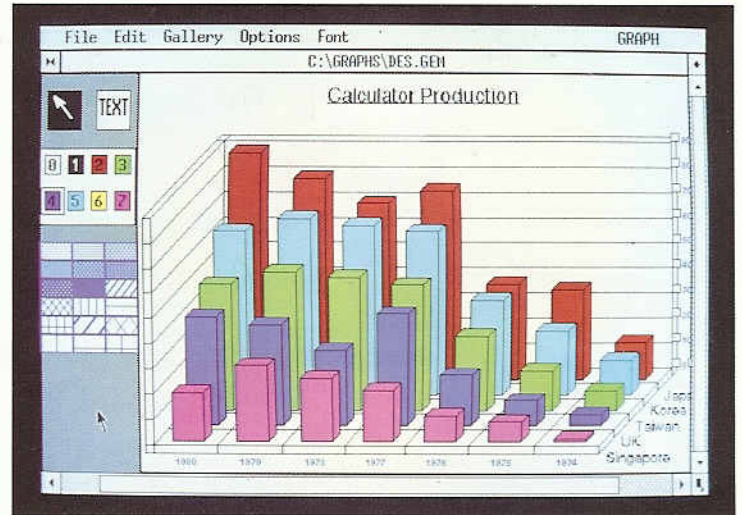
The PC I 640 Enhanced Colour Display (ECD) provides near-photographic quality with a level of colour quality and clarity that is truly outstanding. Sixteen colours can be used at any one time from a choice of sixty-four, and the amazing clarity of both words and graphics is achieved by an exceptionally high 640 x 350 lines resolution.

The Internal Graphics Adaptor is the key to the PC I 640 ECD's incredible screen resolution; this special gate array allows the PC I 640 ECD to provide Enhanced Graphics Adaptor (EGA) mode for handling extra-high resolution colour graphics of 350 lines compared with the standard 200 lines.

The PC I 640 ECD gives even greater definition to text and numbers and it can handle advanced graphics in Computer-Aided Design applications. Desktop publishing and graphic slide presentations are given a healthy boost by the high resolution ECD monitor and many commonly used application packages allow up to 43 lines of text and data to be displayed in EGA mode compared to the 25 available on a standard PC.

PC1640 ECD

enhanced colour display



The PC I 640 Colour Display (CD) features the standard Amstrad colour monitor for users who do not need enhanced colour display. The PC I 640 CD is an ideal colour monitor for popular business applications where its resolution of 200 scanned lines makes it ideal for displaying colour graphs and charts, and highlighting information on the screen.

It can display text in up to 16 colours across 40 or 80 columns, and each character is defined within a matrix of 8 x 8 pixels.

In graphics mode, the PC I 640 CD can generate medium resolution colour graphics of 320 x 200 lines (four colours) or high resolution colour graphics of 640 x 200 lines (16 colours).

The PC I 640 CD can enhance the quality of reporting and information in an organisation. Statistics can be presented in a variety of clear, powerful formats for immediate comprehension and effective decision making.

PC1640 CD

colour display



PC1640 MD

mono display



PC1640 software

The PC1640 allows you to run a range of application programs that can be used to improve the overall efficiency of your business. You can run any of the leading IBM-compatible programs available or choose the high performance, value-for-money range of Amstrad Professional Software.

Wordstar* Express: One of the simplest, yet most sophisticated word processing packages available. It has a full range of editing facilities and features built-in spelling checker, mail merge and diary.

SuperCalc 3.21*: An advanced spreadsheet package with a vast matrix of 245,000 cells to produce complex 'what-if' projections for financial modelling and forecasting, as well as performing advanced mathematical calculations.

The Hercules-compatible PC1640 Mono Display (MD) sets new standards in sharpness and clarity for personal computer screen displays.

Its paper-white mono screen is ideal for applications which involve lengthy sessions working with words, numbers and drawings where colour is not vital. The benefits of working with the new PC1640 MD are immediately apparent to anyone who is sensitive to harsh glare and poor definition.

With its flicker-free high resolution screen, the PC1640 MD can be used for extensive periods without fatigue or eye strain. The 80-column display on the PC1640 MD is made of 252,000 pixels (720 x 350 lines) and that means better quality text and graphics that are comfortable on the eyes. Small typefaces become clear and readable, lines appear straight instead of ragged, and the edges of circles and boundaries are cleaner.

This also means the PC1640 MD can be used for working with the new generation of graphics-intensive Desktop Publishing and Computer-Aided Design applications. In addition, the PC1640 MD is perfectly suitable for use on a network in either a terminal or fileserver capacity.

Amstrad InfoMaster:™ A database package that speeds up the efficient storage and retrieval of information. It allows the user to decide how the database is to be organised and how the information is to be presented. The program has built-in checks to ensure data is entered quickly and accurately.

Amstrad AccountsMaster:™ An integrated UK accounting package that streamlines accounting procedures for maximum efficiency. The package is designed as five easy-to-use modules covering Sales, Purchase and General Ledgers, together with Invoicing and Stock Control.

Amstrad PayMaster:™ A UK payroll package that simplifies the administration of payroll, tax, National Insurance, overtime, holidays and Statutory Sick Pay. Paymaster can handle up to 999 employees in 99 departments, with 16 special deductions per payroll.

Games programs: During the lunch break, or after work, settle down and enjoy one of Amstrad's on-screen games packages: Snooker, Chess, Golf, Pitstop, Summer and Winter Olympics.

PC1640

compatible printers

The Amstrad PC 1640 has both serial and parallel printer ports so that it can be connected to almost any printer but, to get the most cost-effective printed results, choose from the range of high-quality dedicated Amstrad printers.

Amstrad DMP 4000:™ A solution to any printing requirement. It can produce 100 different typeface combinations and print at speeds up to 200 characters per second for drafts or up to 50 characters per second for near letter-quality printing. The 15-inch wide carriage handles a wide range of paper sizes from 2-15½ inches (50-395 mm).

Amstrad DMP 3250di:™ This fast versatile printer has a printing speed of up to 160 characters draft per second or up to 40 characters per second for near letter-quality standard. It handles cut sheet or continuous feed paper and has an ingenious flatbed design for easy paper insertion and alignment.

Amstrad LQ3500di:™ This letter-quality printer has a printing speed of up to 160 characters per second for drafts and a letter-quality speed of up to 54 characters per second. It can handle cut sheet or continuous paper and is designed specifically for easy paper insertion or alignment.

Amstrad LQ5000di:™ A high-performance, heavier-duty letter-quality printer to handle your most



DMP 4000



LQ
3500di



DMP 3250di



LQ
5000di

demanding printing requirements. It produces drafts at up to 288 characters per second and ultra-sharp letter-quality print at up to 96 characters per second. There is an extremely wide choice of pitches and typefaces coupled with full ASCII, Epson and IBM PC-compatible graphics character sets, making it a complete office printing solution.

PC1640

communications modem

Amstrad MC2400 Modem Card Versatile high-speed data communications

The new Amstrad MC2400 PC Modem Card is ideal for high-speed data communications. This quad standard unit has four operating speeds, including V22 bis capable of transmitting and receiving data at 2400 bits per second.

The MC2400 Modem Card simplifies data transfer and gives the PC 1640 a gateway to a vast network of global communications. It facilitates access to telex, electronic mail services and commercial databases, all with the simplicity of a telephone call. The Modem Card provides comprehensive Prestel support, including character and graphics mode, text send, capture of dynamic frames or text-only files to disc file, and down-loading of software. Text that has previously been created can be sent to Prestel and other services, saving you connect-time charges.

It also provides accurate high-speed data transfer facilities for exchanging files with another computer with a compatible modem anywhere in the world. A wide variety of file transfer protocols are supported.

Many of the operating routines are automated to simplify and speed up access and transfer processes, and there are extensive help facilities on the system. There is a background answer-mode with password protection and automatic Script file control, together with learn mode for the automatic creation of auto-logon scripts.



AMSTRAD

business computing

AMSTRAD

Integrated personal computing

The PC I 640 allows you to develop an integrated personal computing strategy for both new and experienced users. For the new user, it provides a friendly, easy-to-use system with tutorials, screen menus and clear documentation. The GEM* Desktop program, which is included as standard, is designed just like a conventional desktop, with files, documents and folders and many other functions such as a calculator and a calendar. New users quickly become familiar with the system.

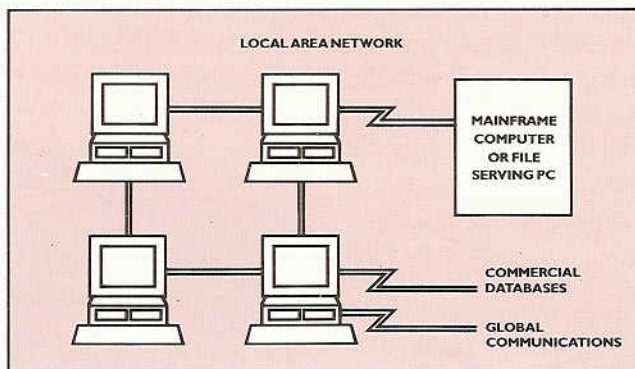
For the experienced user the PC I 640 offers an extraordinary breadth of function. It is fast – with 640K of memory to handle sophisticated software, and it can run programs at up to twice the speed of many of its competitors. Three expansion slots are provided (even with the hard disc version) which accept a wide range of standard cards for applications such as networking, modems and other utilities.

System design flexibility

Nine versions of the PC I 640 give you complete flexibility to configure the right system for your organisation. There is a choice of colour, enhanced colour or monochrome displays, and single, double or hard disc versions for complete storage flexibility. The PC I 640 is easily expanded with built-in expansion slots, and it has connectors for a wide range of printers, modems, graphics tablets, plotters and many other accessories.

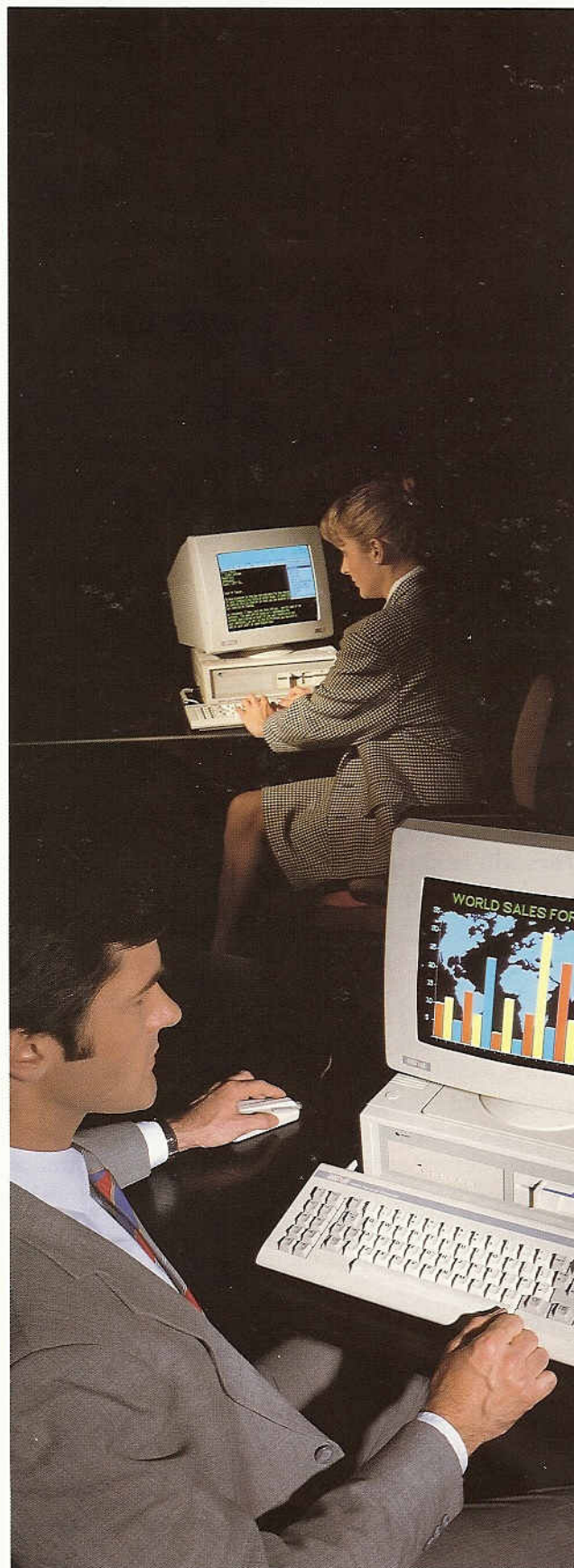
Networking

The PC I 640 is an ideal networking product: it can be linked to a mainframe†, providing up to three extra network terminals for the price you could pay for one; and it can improve productivity dramatically. Data communications are simple: the PC I 640 has been thoroughly proven on the industry standard Novell* and IBM Token Ring* Networks so you can set up a fully-integrated corporate network with a clear growth path for future expansion.



Comprehensive peripheral support

The range of Amstrad peripherals and software suitable for use with the PC I 640 has recently been enhanced with an increased choice of dedicated printers, a new modem and advanced word processing software.



PC1640

specifications & features



Internal Graphics Adaptor fully compatible with Hercules, MDA, CGA, and EGA providing 40/80 column medium resolution, high resolution and extra high resolution mode with 16 colours

● **640K system unit with all circuitry on a single motherboard**

● **8MHz 8086 processor**

Three full-size compatible expansion slots (even with hard disk option)

Choice of one or two 360K 5 1/4" floppy disks or one floppy with a 20 Megabyte hard disk drive

Motherboard includes RS 232 serial and parallel interface with standard connectors

Loudspeaker with volume control

Battery back-up real time clock and configuration RAM

Socket for 8087 maths co-processor

Connector for light pen and/or joystick

● **Full-size keyboard**

Illuminated Numlock and Capslock

Keyboard joystick port

Extra Del and ENTER keys

Adjustable legs



● **Two-button mouse with dedicated port on system unit**

Microsoft-compatible MOUSE.COM plus special text operation

● **Extensive Operating Software including four diskettes**

Compatible ROM BIOS

Microsoft MS DOS* 3.2 Operating System

Compatible device drivers with RAMdrive and enhanced media flexibility

Wide range of compatible utilities

Special utility to support display interchangeability

Networking and hard disk support

Digital Research GEM* (Graphics Environment Manager) plus GEM Desktop

Digital Research GEM Paint

GEM based Locomotive BASIC 2*

Switch-selectable International character sets

● **Choice of one of three displays (paper-white mono, colour, enhanced colour) with standard video connector**

ECD monitor has 0.31 mm pitch shadow mask

CD monitor has 0.42 mm pitch shadow mask

Internal Graphics Adaptor provides:

Mono (MD):

80 column high resolution text with 9 × 14 dot characters

Hercules compatible graphics 720 × 350 lines

EGA compatible Monochrome graphics 640 × 350 lines

Colour (CD):

(for use with CGA and 200-line EGA software)

40/80 column text with 8 × 8 dot characters in 16 colours

Medium resolution graphics 320 × 200 lines in 4 colours

High resolution colour graphics 640 × 200 lines in 2 or 16 colours

Enhanced colour (ECD):

40/80 column text with 8 × 14 or 8 × 8 dot characters in 16 colours

Medium resolution graphics 320 × 200 lines in 4 colours

High resolution colour graphics 640 × 200 lines in 2 or 16 colours

Extra-high resolution graphics 640 × 350 lines in 16 out of 64 colours

● **Manuals:**

A comprehensive 550 page manual is supplied with the PC1640.

Two further manuals are available:

BASIC 2 User Guide

Amstrad PC 1640 Technical Reference Manual

Dimensions (approx):	WIDTH	HEIGHT	DEPTH
Monitors (Unboxed)			
PC-MD	350mm	315mm	300mm
PC-CD	370mm	320mm	360mm
PC-ECD	370mm	320mm	360mm
System Unit	370mm	135mm	384mm

Gross Weights (approx):

	(Boxed)	(Unboxed)
Monitors		
PC-MD	9.0kg	8.0kg
PC-CD	13.5kg	11.5kg
PC-ECD	13.5kg	11.5kg

	(Boxed)	(Unboxed)
System unit		
PC-SD	8.9kg	5.0kg
PC-DD	10.5kg	5.8kg
PC-HD	11.0kg	6.0kg
Keyboard	(Boxed with System Unit)	1.2kg

† Optional modem required. ‡ Cards and software may be necessary.

In keeping with our policy of continually improving our service and the technical quality of our products, we reserve the right to change component type, manufacturers, sources of supply and technical specification at any time. Dimensions, speeds, weights and colours contained in this brochure are approximate. Prices and products may be altered without notice at any time. Products subject to availability.

Nothing contained in this brochure is intended to extend any warranty or representation, express or implied, with regard to the products and services described.



AMSTRAD plc,
BRENTWOOD HOUSE, 169 KINGS ROAD,
BRENTWOOD, ESSEX, ENGLAND CM14 4EF
TELEPHONE: (0277)230222

© 1988 AMSTRAD plc. All rights reserved.

All software is sold subject to standard licence forms.

* MS-DOS is a Trademark of Microsoft Corporation.

Wordstar is a Trademark of Micro Pro Inc.

Supercalc is a Trademark of Computer Associates International Inc.

IBM is a Trademark of International Business Machines Corporation.

GEM is a Trademark of Digital Research Corporation.

BASIC 2 is a Trademark of Locomotive Software Ltd.

Novell is a Trademark of Novell Inc.

The name and logo AMSTRAD are Registered Trademarks of Amstrad plc.